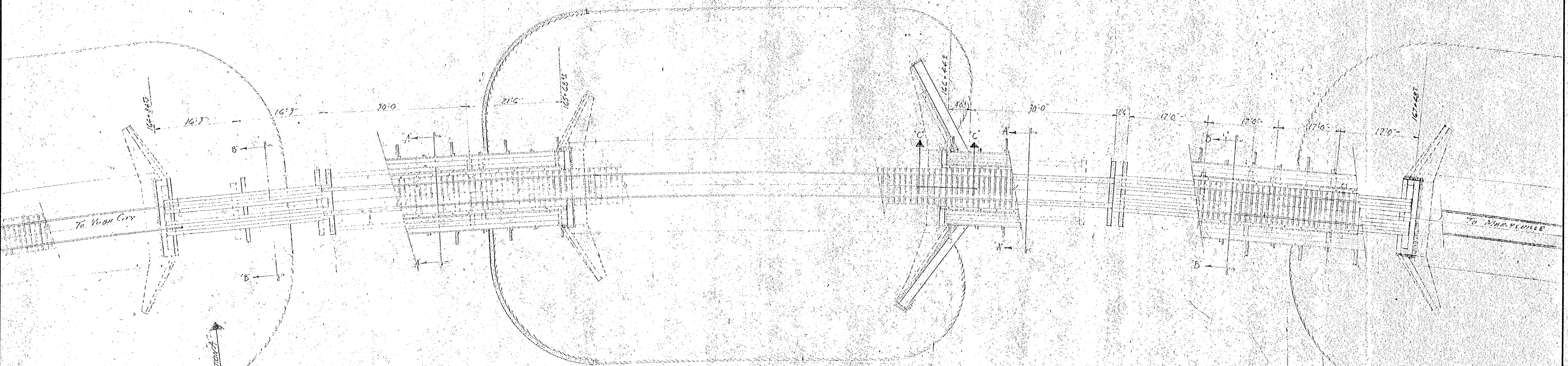
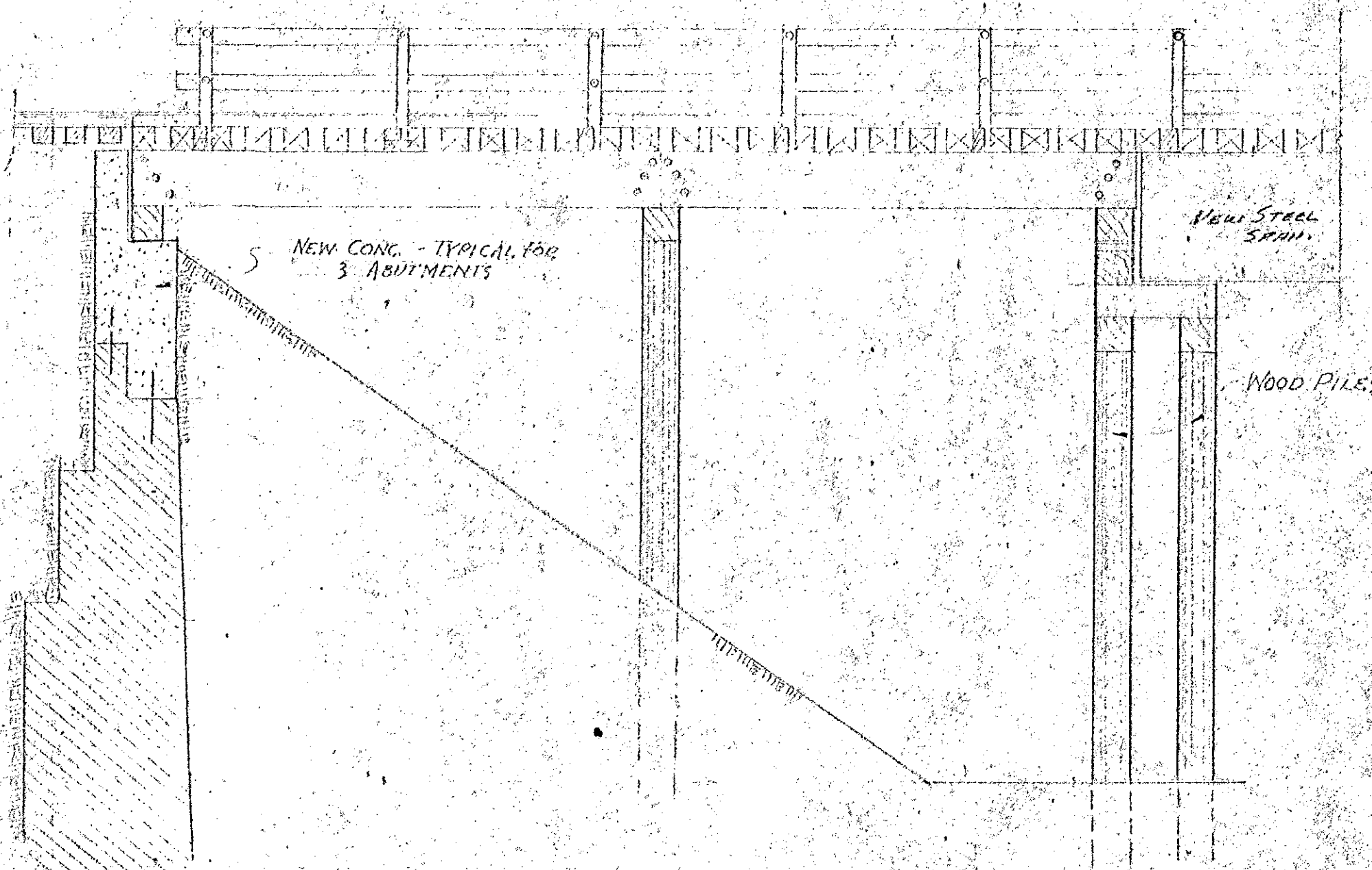


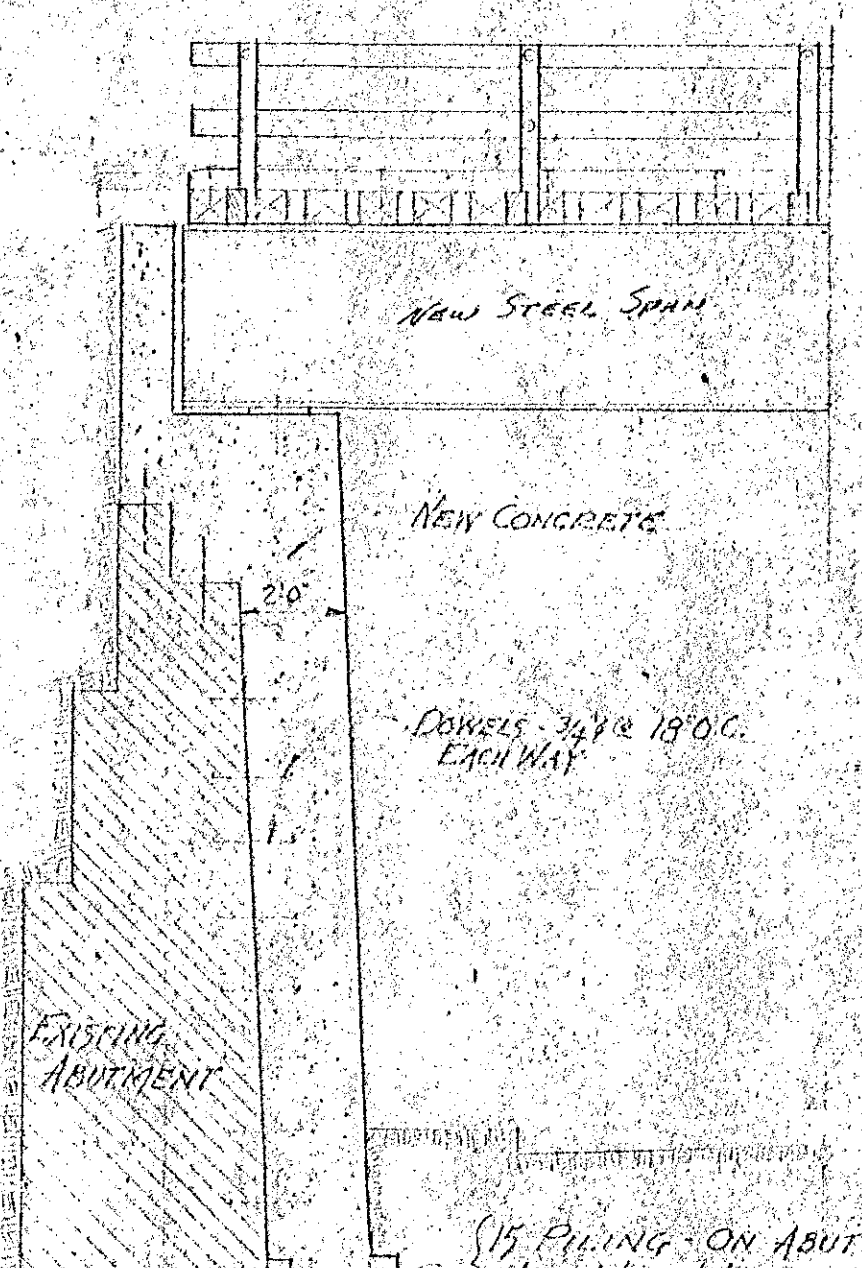
ELEVATION SCALE 1"=10'



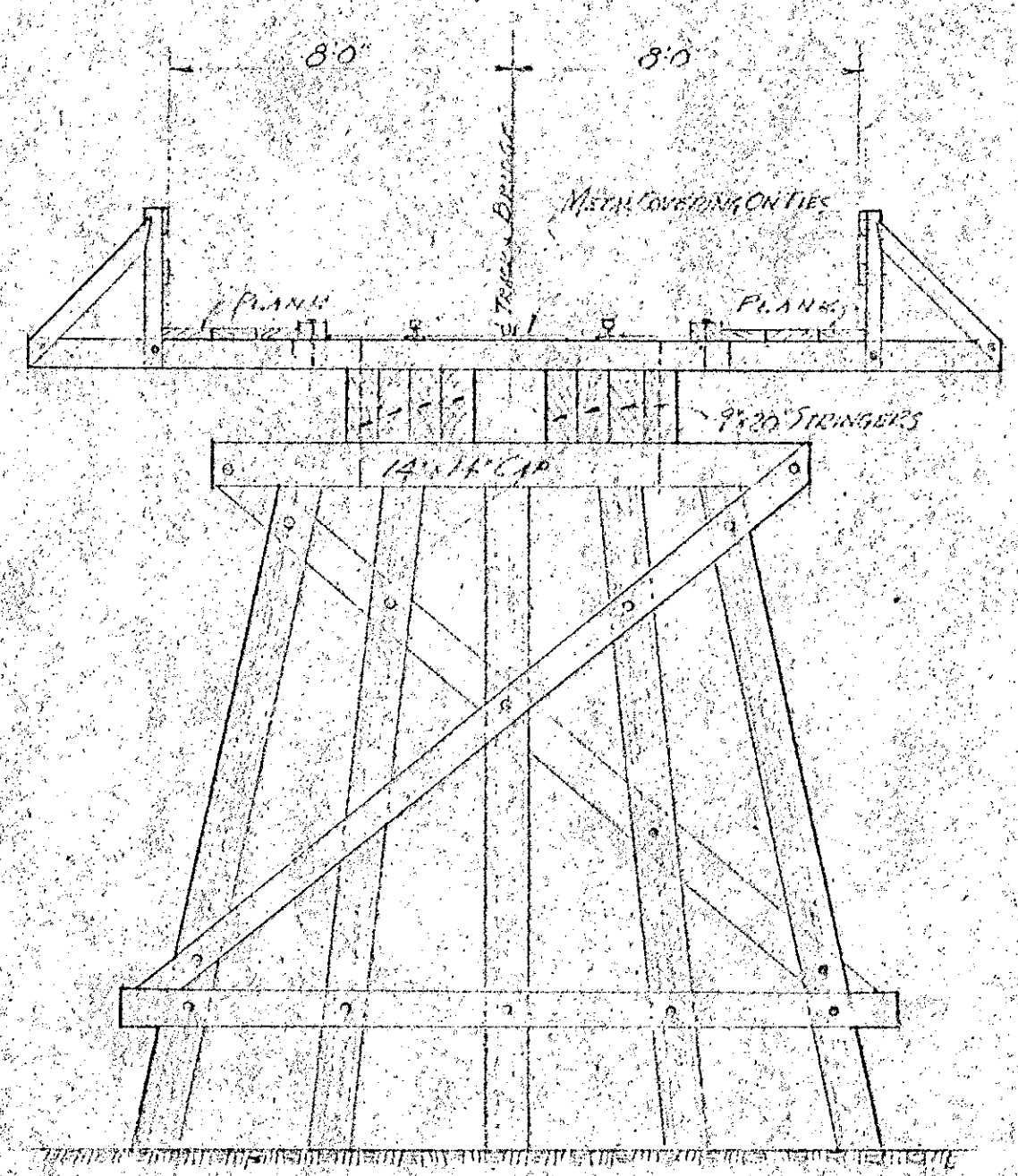
PLAN SCALE 1"=10'



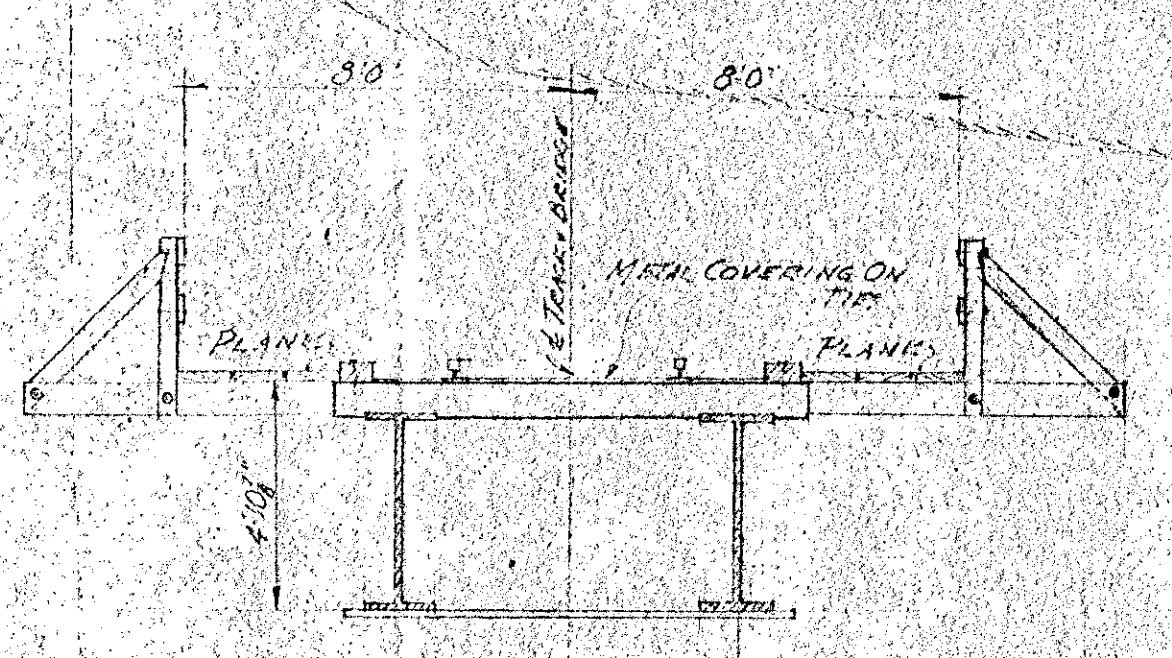
ELEVATION A SCALE 1"=10'



SECTION C-C SCALE 1"=10'



SECTION B-B SCALE 1"=10'

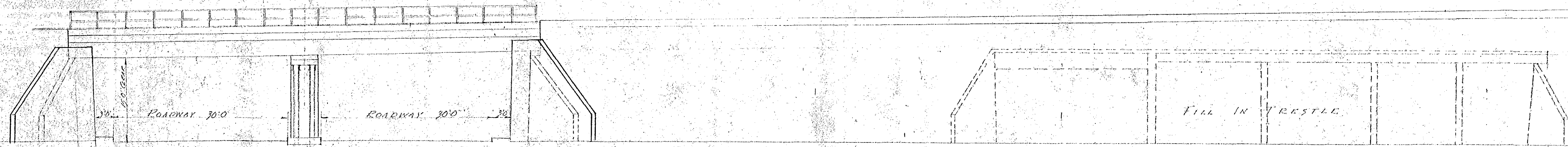


SECTION A-A SCALE 1"=10'

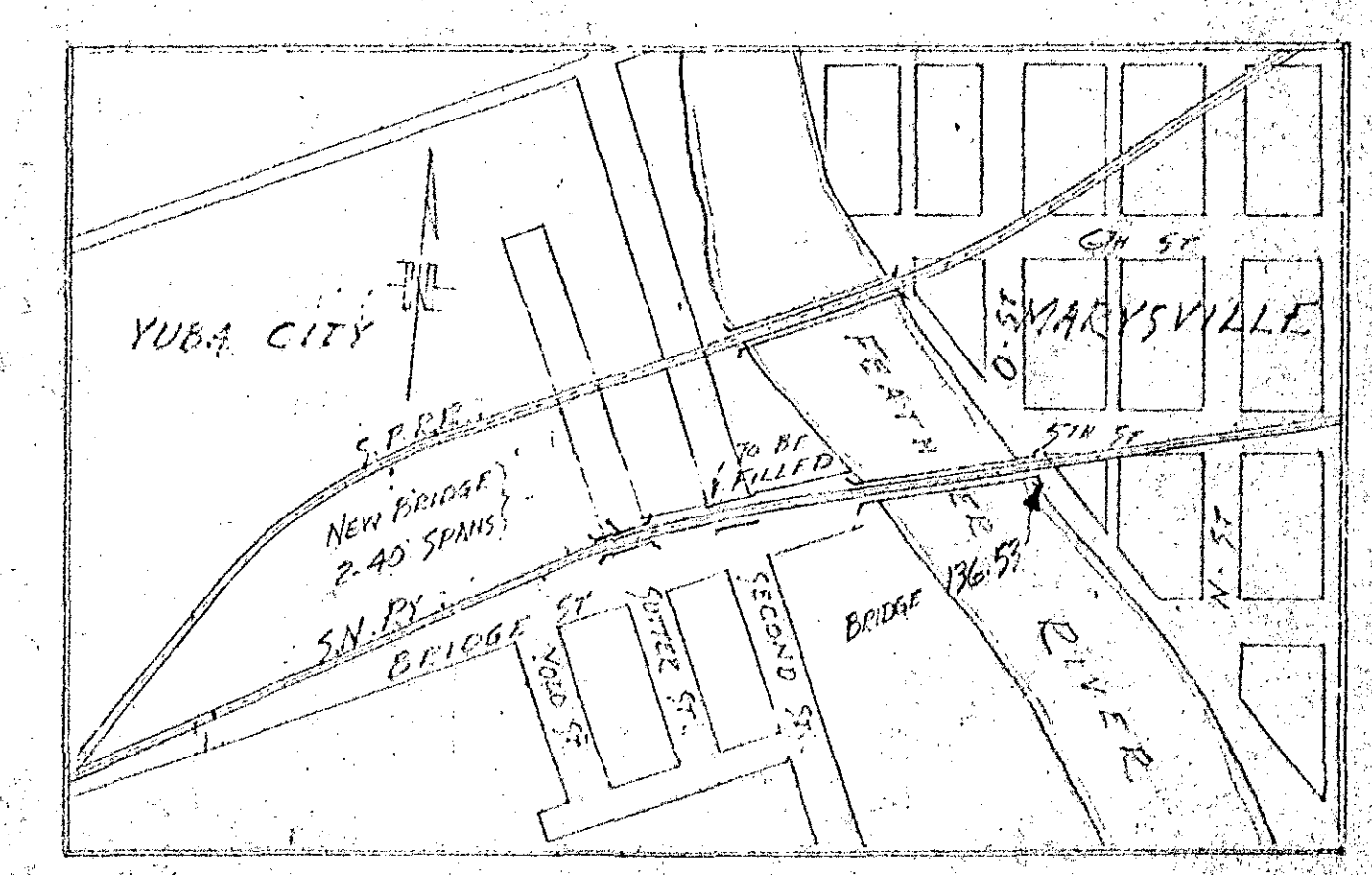
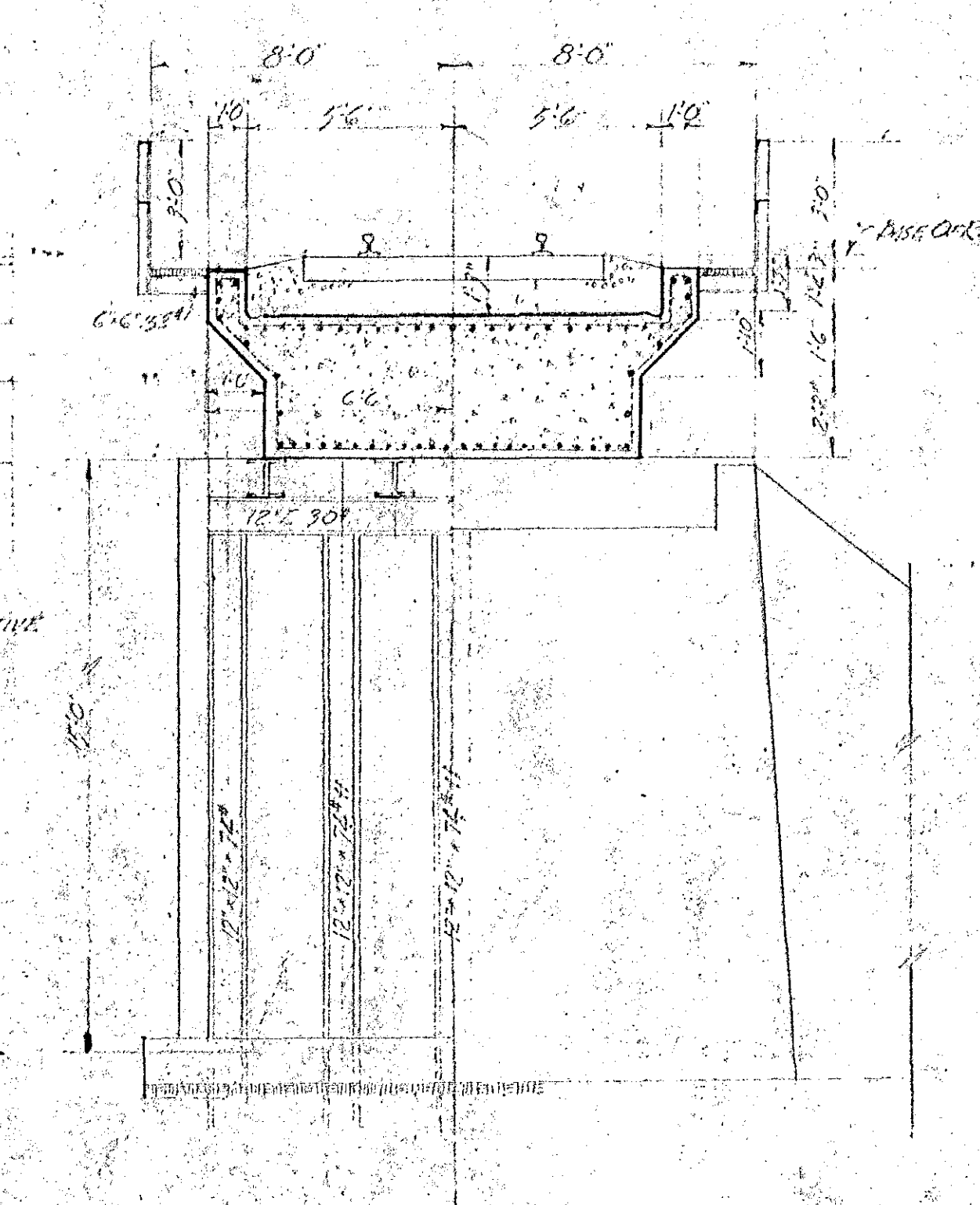
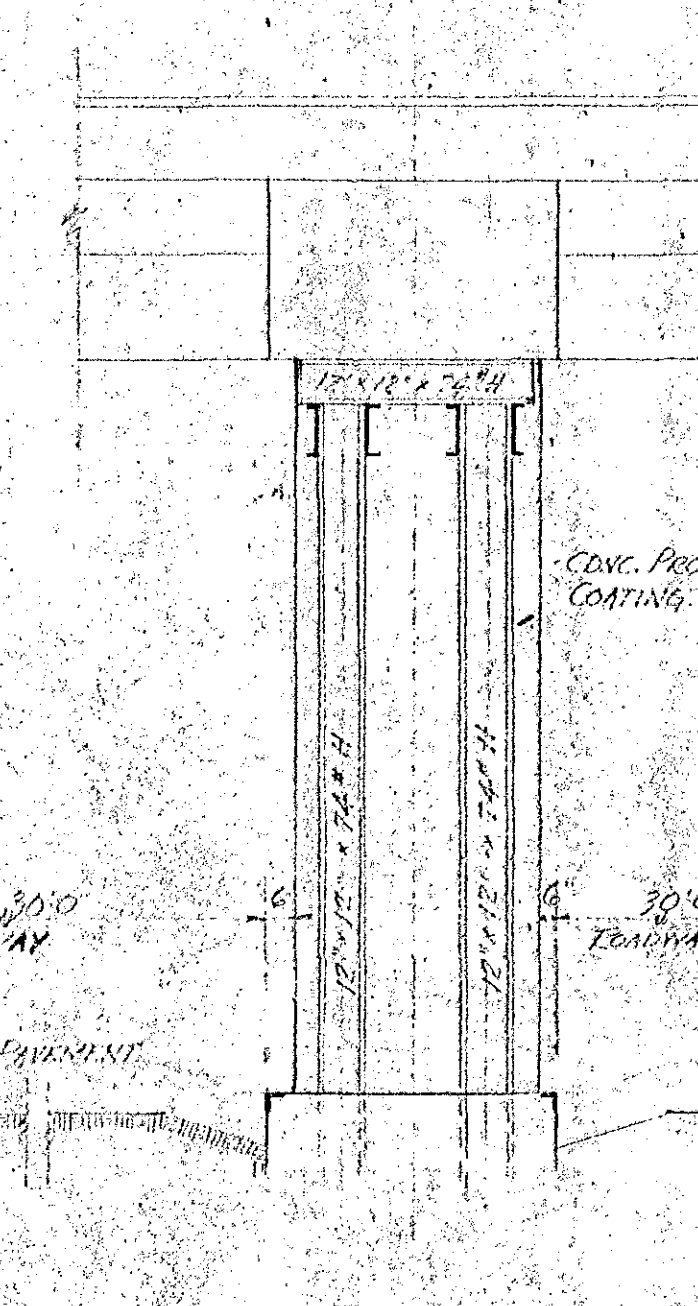
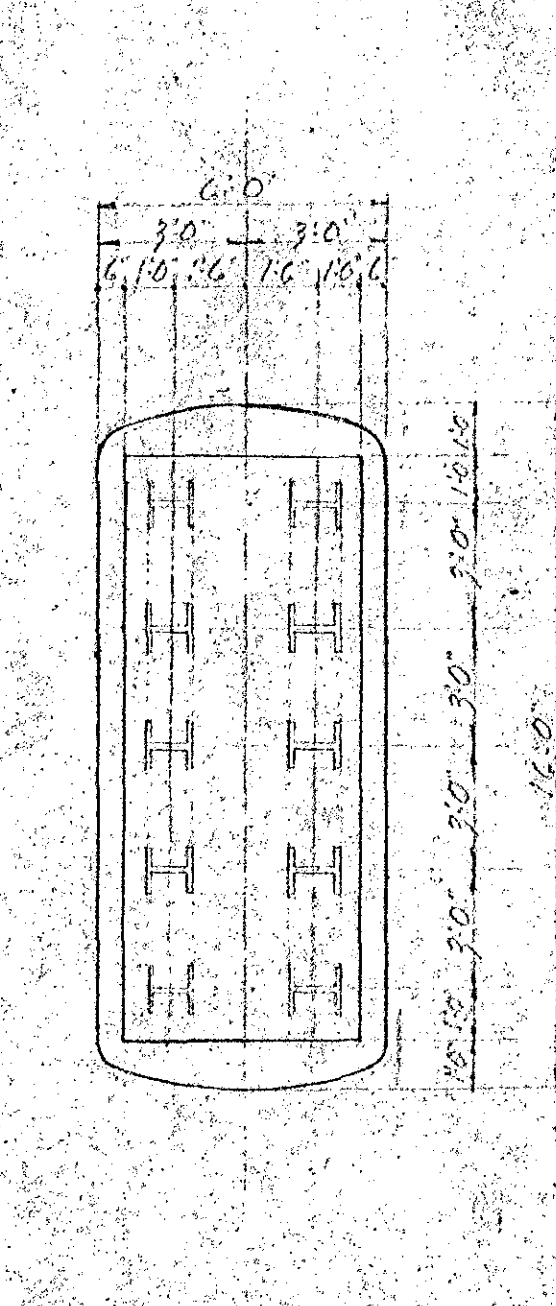
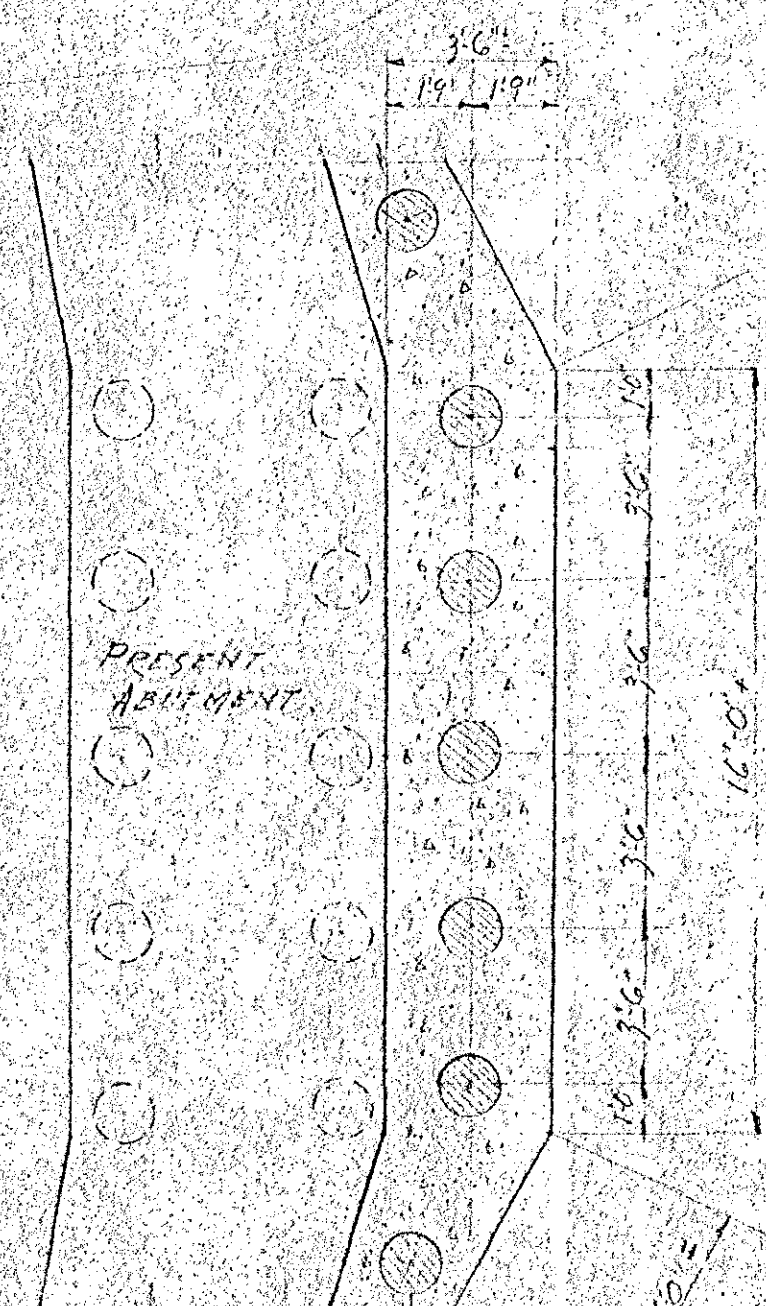
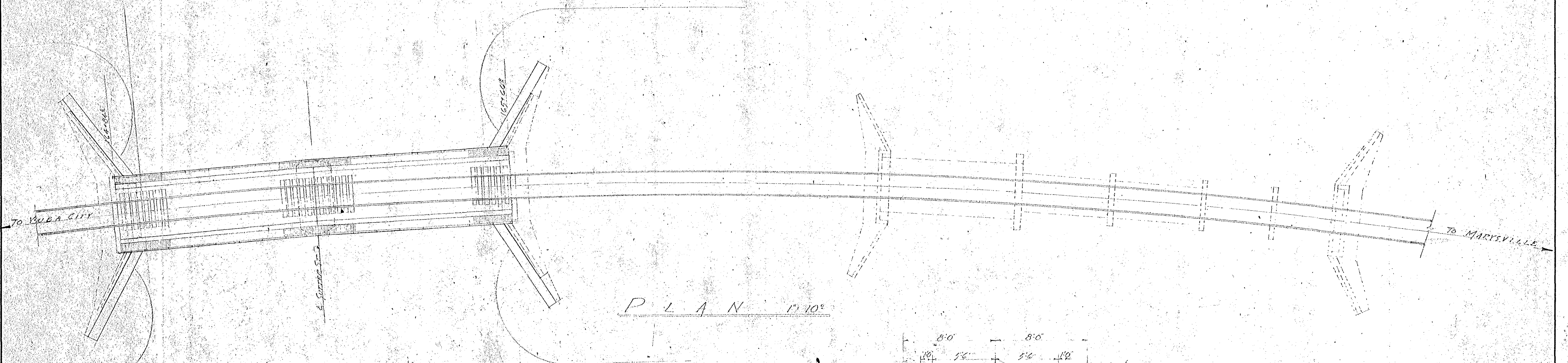
#6145

PLAN 4

SACRAMENTO NORTHERN RAILWAY	
826 MISSION ST. SAN FRANCISCO 5, CALIF.	
BRIDGE 136 851	
MAY 1950 RECEIVED CITY OF YUBA CITY	
OFFICE OF CHIEF ENGINEER • SAN FRANCISCO	
DR. C. G. GARDNER	APPROVED: J. W. C.
CK.	TITLE:
DATE:	NO. SHEETS
TABLE OF CHANGES	
SCALE: As Noted	DRAWING NO. CG-B-3764
	SHEET C



ELEVATION Scale 1"=10'



LOCATION PLAT Scale 1"=200' PLAN #2

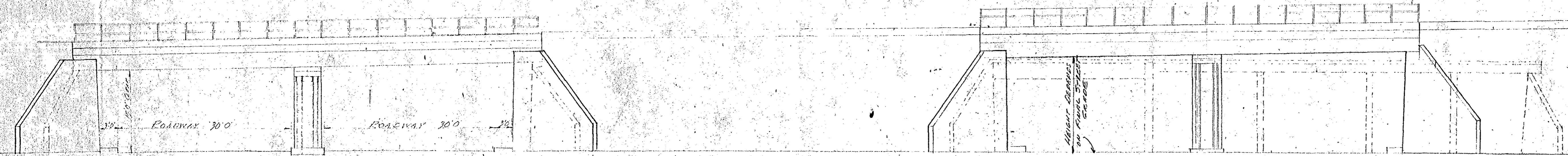
SACRAMENTO NORTHERN RAILWAY
 526 MISSION ST. SAN FRANCISCO 5, CALIF.
BRIDGE 136.85
 2-40 FT. PRECAST BALLAST SPANS - SUTTER ST - YUBA CITY

OFFICE OF CHIEF ENGINEER - SAN FRANCISCO
 DR. G. G. [Signature] APPROVED [Signature]
 DATE: 5-2-76
 SCALE: As Shown
 DRAWING NO. B-3764
 SHEET A

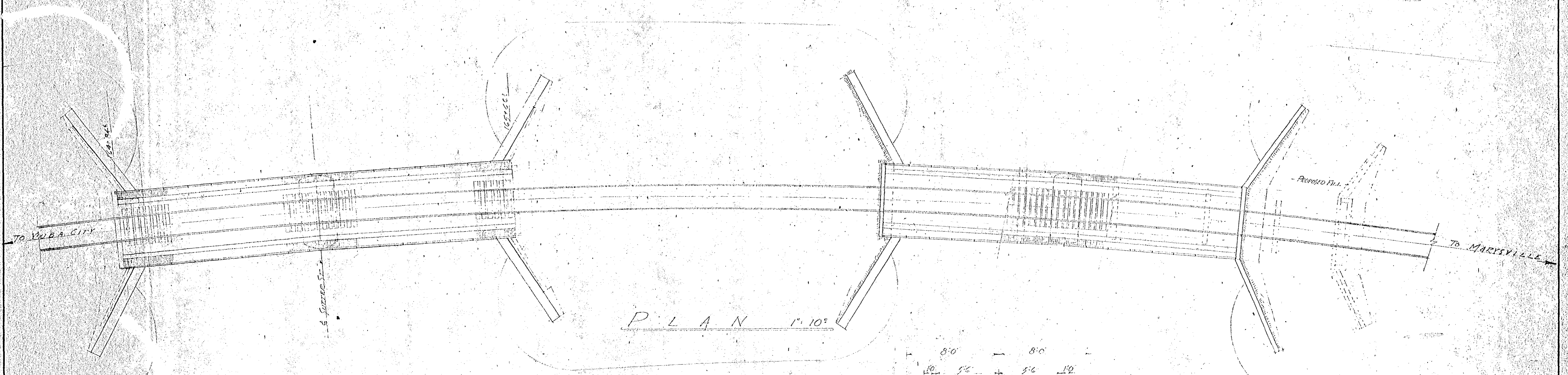
#446

LT	DATE	DESCRIPTION	BY	REVISION

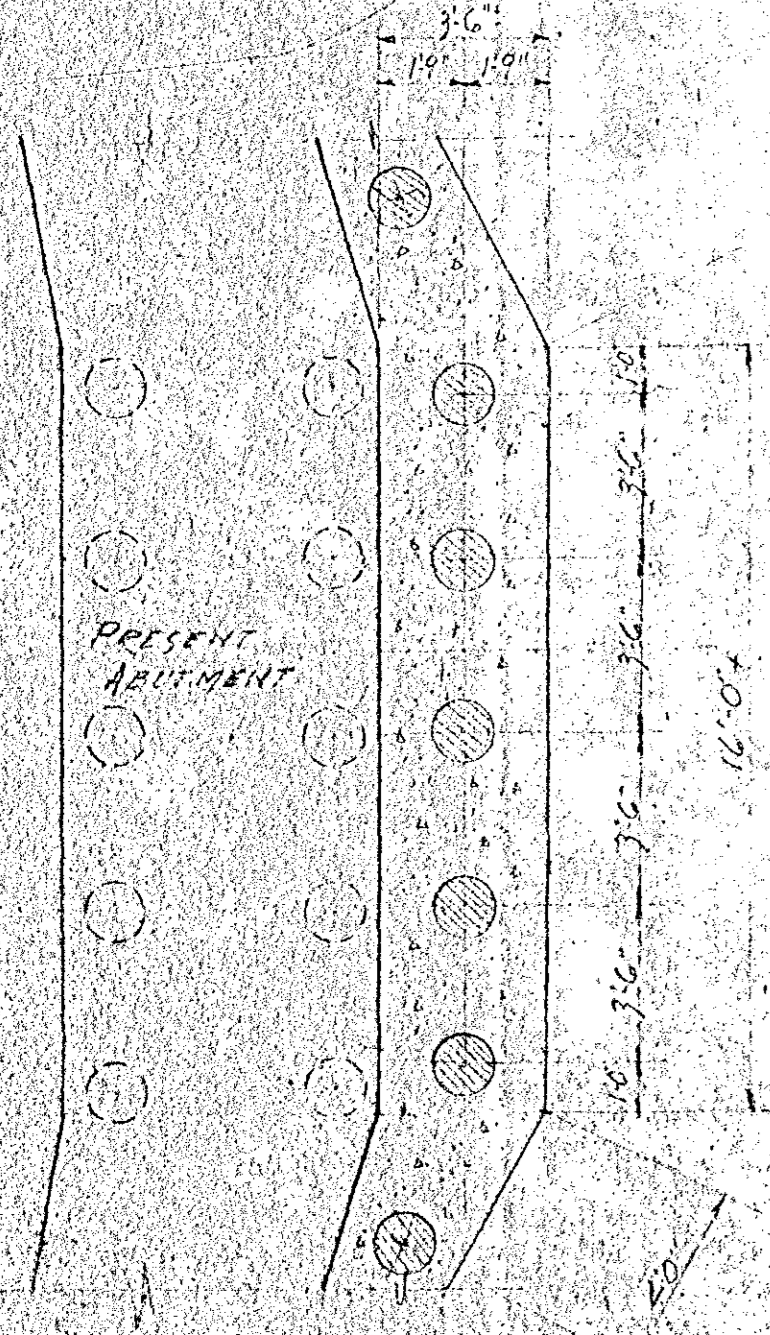
TABLE OF CHANGES
 USE ONLY PRINTS SHOWING LATEST CHANGES



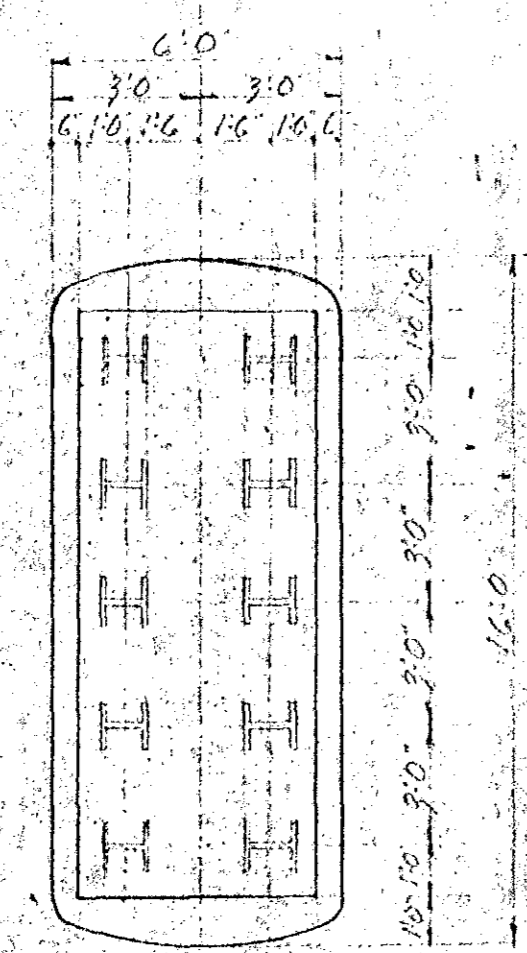
ELEVATION SCALE 1"=10'



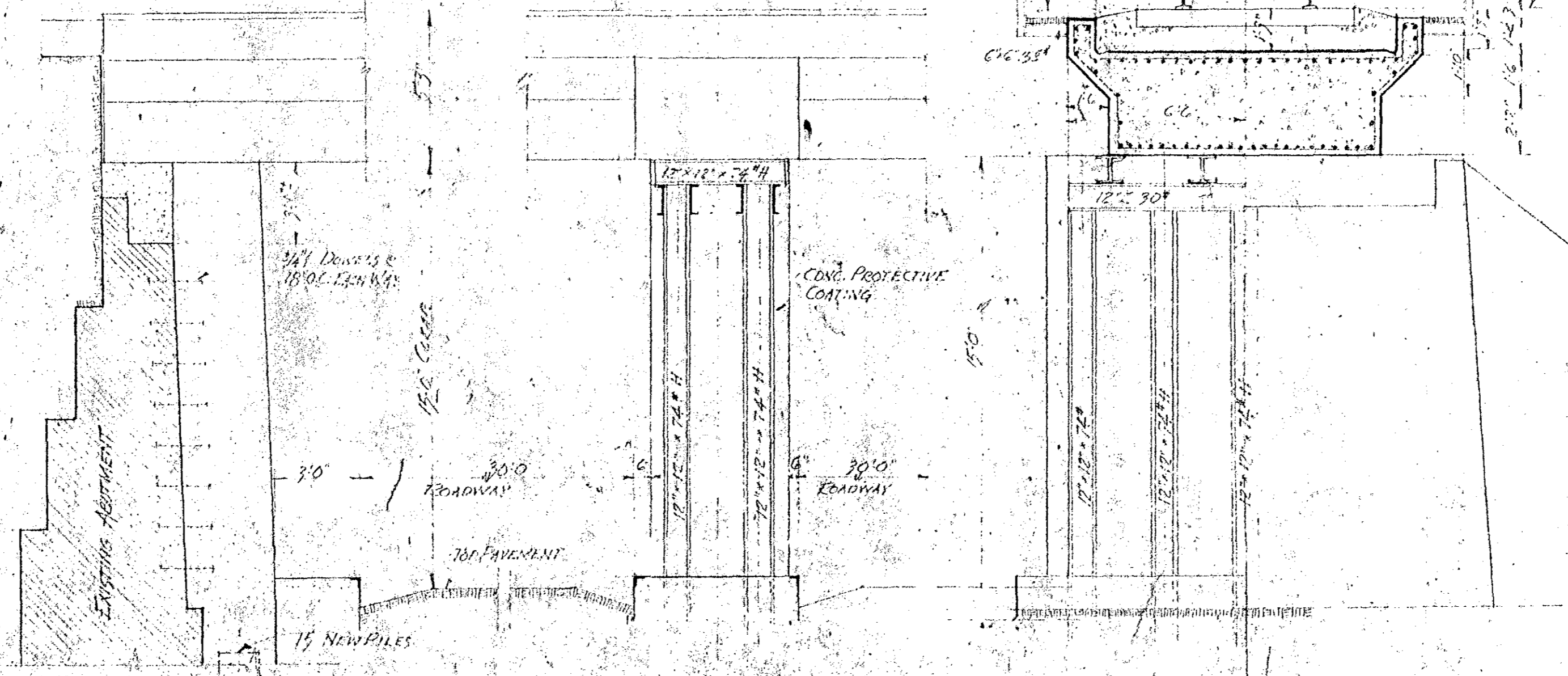
PLAN 1"=10'



FOUNDATION PLAN
ABUTMENT SCALE 1/4"=10'



FOUNDATION PLAN
PIER SCALE 1/4"=10'

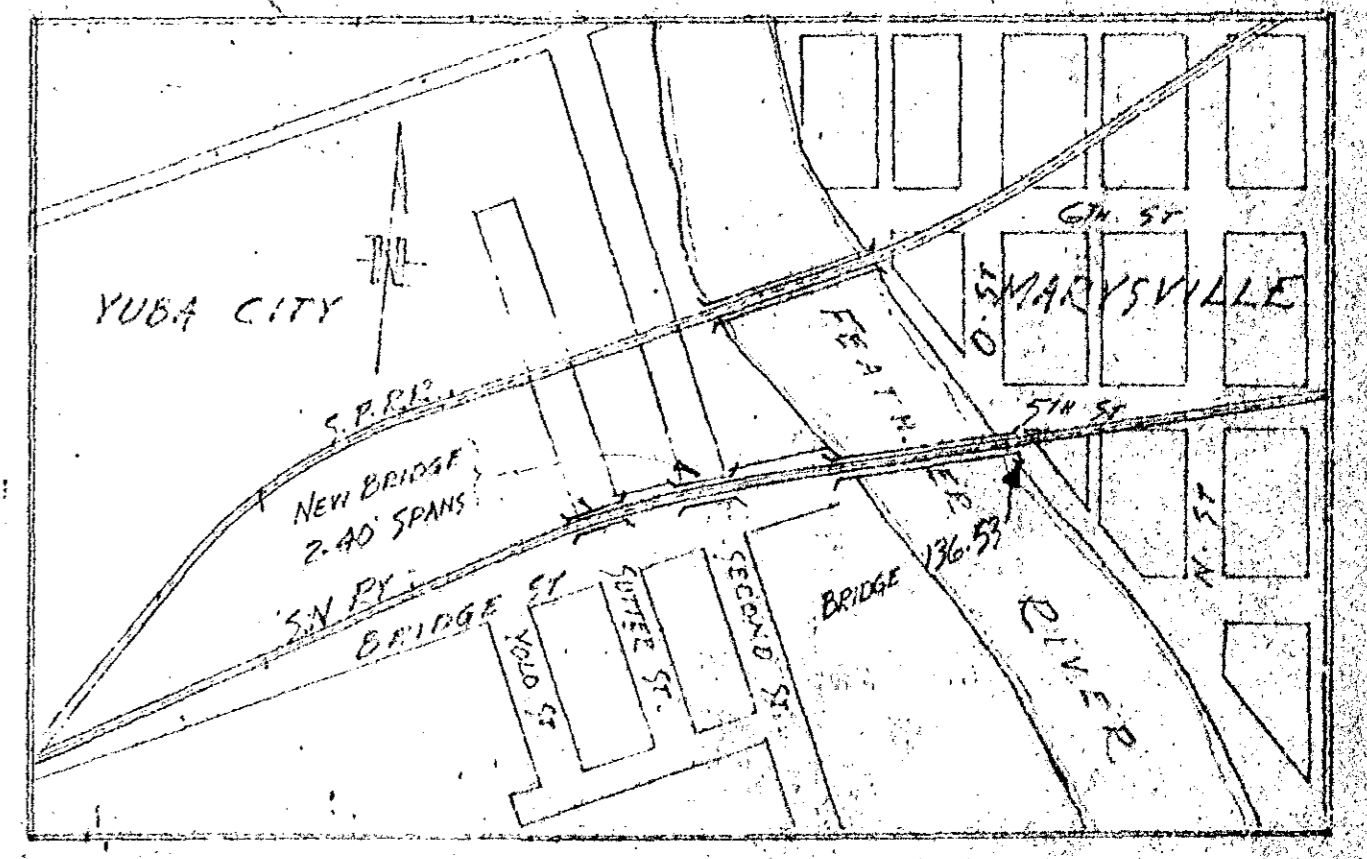


END ELEVATION ABUTMENT

END ELEVATION PIER

HALF ELEVATION OF PIER

HALF ELEVATION OF ABUTMENT



LOCATION PLAT
SCALE 1"=400'

PLAN #3

SACRAMENTO NORTHERN RAILWAY	
526 MISSION ST. SAN FRANCISCO 5, CALIF.	
BRIDGE 136-85	
2-40 FT. PRE-CAST BALLST. DECK SPANS - SUTTER ST - YUBA CITY	
MAY 1935	
RECEIVED	
OFFICE OF CHIEF ENGINEER - SAN FRANCISCO	
Dr. C. G. Gentry	Approved
Chf. Engr.	Chf. Engr.
DATE: 5-26-35	TITLE:
SCALE: As Noted	DRAWING NO. CE-B-3764
SHEET: 2	TOTAL SHEETS: 2

LTN.	DATE	DESCRIPTION	BY
TABLE OF CHANGES			
USE ONLY PRINTS SHOWING LATEST CHANGES			